

Trans-Positioner & Trans-Stacker - flexible handling of goods

High flexibility and efficiency - with only one truck, goods can be transported, lifted and handled in many different ways.

The design puts focus on the safety and ergonomic working conditions of the user - TS and TP can be adjusted to the individual user, and the ergonomic correct handle ensures the user a relaxed hold.

Optimum utilization of the space - TS and TP are of compact construction and are very maneuverable.

High quality is ensured through an extended test program and in cooperation with experts in Health and Safety.



TRANS-STACKER & TRANS-POSITIONER (LOGIFLEX)



Technical Specifications

- Optimum safety for the user through
- central location of all control buttons on the handle
 - transparent and impact-resistant safety screen on the mast
 - location of parking brake

Strong construction ensures a long operating life and low maintenance costs.



Ergonomic handle ensures the user a relaxed hold. The handle can be marked with the name/department.



High maneuverability: Short overall length, large turning angle, assisted steering and low own weight.



Adjustable forks are standard for LF Mini and are available for ELF as optional extra.

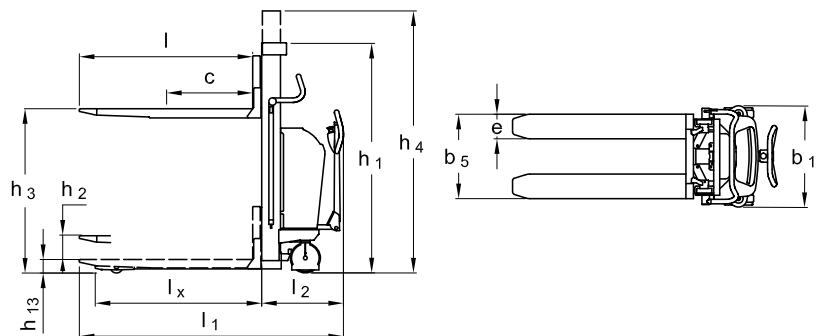
Available with manual and electric lifting.

| Product (measured in inch) | TP-MM MINI | TS-MM MINI | TP-ME | TS-ME | TS-ME | TS-ME | TS-ME | TS-ME | TS-ME | TS-ME | TS-ME | TS-ME |
|---------------------------------------|---|------------|---------------------------------------|-----------|-----------|-----------|-------|---------------------|-------|-------|-------|-------|
| Capacity in lbs | 2200 | 2200 | 2200/3000 | 2200/3000 | 2200/3000 | 2200/3000 | 2200 | 2200 | 2200 | 2200 | 2200 | 2200* |
| Lifting height h_3 | 36 | 63 | 36 | 47 | 55 | 63 | 75 | 80 | 96 | 112 | 130 | |
| Fork length l | 42, 45 | | 23.5**, 31.5**, 45, 60*** | | | | | | | | | |
| Overall height h_1 | 52.5 | | 52 1/2 | 60 | 68 | 76 | 88 | 60 | 68 | 76 | 88 | |
| Overall width b_1 | 27 | | 27 | | | | | | | | | 36.75 |
| Fork span b_5 | Wrap-over: 13.25-22 | | 19****, 22, 27 | | 22, 27 | | | | | | | |
| Length without forks l_2 | 16.35 | | 23.25 | | | | | | | | | |
| Overall length with 1150 forks l_1 | 66 | 66.25 | 71 | | | | | 71.25 | | | | |
| Overall height h_4 | 52.5 | 79.75 | Without telescopic mast | | | | | 98 | 114 | 130 | 148 | |
| Lowered height h_{13} | 3.25 (fork span 22) 5.75 (fork span 13.25-21.75) | | 3.25 | 3.25 | | | | | | | | |
| Load centre c | 1/2 | | 1/2 | | | | | | | | | |
| Fork width e | 6.5 | | 6.5 | | | | | | | | | |
| Run-in length l_x | 43 with 45 forks | | 43 with 45 forks | | | | | | | | | |
| Gangway (pallet: 1200 x 800) A_{st} | 86***** | | 88.5***** | 90***** | | | | | | | | |
| Free lift h_2 | 13 | | 7.5 | | | | | | | | | |
| Turning angle of the wheels | 180° | | 180° | | | | | | | | | |
| Pump motor | 1,1 kW 12 V | | | | | | | | | | | |
| Lifting speed | normal/quick: 0.3" / 1" per pump | | With/without load: 2 / 2.75" per sec. | | | | | | | | | |
| Lowering speed with/without load | max. 7.5" per sec. / max. 2.8" per sec. | | 4.75" per sec. / 2.75" per sec. | | | | | 4.75" / 3" per sec. | | | | |
| Weight in lbs (without battery) | 485 | 560 | 488 | 531 | 544 | 552 | 571 | 664 | 681 | 710 | 816 | |

* Load reduction at large lifting height.
 ** Maximum lifting height 63" with 23.5" forks, maximum lifting height 96" with 31.5" forks.
 *** Reduced capacity 1650 lbs. Not available for 3000 lbs. models.
 **** Only for 2200 lbs. models.
 ***** Tests show that 67" are enough.



Available with side-tilting forks and/or optional extras, e.g. drum turner, crane arm, spear, remote control, level control.



We also offer tailor-made solutions. Please ask for further information.
 Please ask for further information or visit our website www.interthor.com



Interthor Inc.
 1817 Beach Street - Broadview, IL 60155 - USA
 Tel.: 708-345-1270 - Fax: 708-345-1290
www.interthor.com - E-mail: info@interthor.com