

Trans-Positioner & Trans-Stacker - flexible handling of goods

High flexibility and efficiency - with only one truck, goods can be transported, lifted and handled in many different ways.

The design puts focus on the safety and ergonomic working conditions of the user - TS and TP can be adjusted to the individual user, and the ergonomic correct handle ensures the user a relaxed hold.

Optimum utilization of the space - TS and TP are of compact construction and are very maneuverable.

High quality is ensured through an extended test program and in cooperation with experts in Health and Safety.



TRANS-STACKER & TRANS-POSITIONER (LOGIFLEX)



Technical Specifications

- Optimum safety for the user through
- central location of all control buttons on the handle
 - transparent and impact-resistant safety screen on the mast
 - location of parking brake

Strong construction ensures a long operating life and low maintenance costs.



Ergonomic handle ensures the user a relaxed hold. The handle can be marked with the name/department.



High maneuverability: Short overall length, large turning angle, assisted steering and low own weight.



Ny tekst

Available with manual and electric lifting.

Product (measured in inch)	TP-MM MINI	TS-MM MINI	TP-ME	TS-ME	TS-ME	TS-ME	TS-ME	TS-ME	TS-ME	TS-ME	TS-ME
Capacity in lbs	2200	2200	2200/3000	2200/3000	2200/3000	2200/3000	2200	2200	2200	2200	2200*
Lifting height h_3	36	63	36	47	55	63	75	80	96	112	130
Fork length l	42, 45		23.5**, 31.5**, 45, 60***								
Overall height h_1	52.5		52 1/2	60	68	76	88	60	68	76	88
Overall width b_1	27		27								
Fork span b_5	Wrap-over: 22		19****, 22, 27		22, 27						
Length without forks l_2	16.35		23.25								
Overall length with 1150 forks l_1	66	66.25	71					71.25			
Overall height h_4	52.5	79.75	Without telescopic mast					98	114	130	148
Lowered height h_{13}	3.25		3.25	3.25							
Load centre c	1/2		1/2								
Fork width e	6.5		6.5								
Run-in length l_x	43 with 45 forks		43 with 45 forks								
Gangway (pallet: 1200 x 800) A_{st}	86*****		88.5*****		90*****						
Free lift h_2	13		7.5								
Turning angle of the wheels	180°		180°								
Pump motor			1,1 kW 12 V								
Lifting speed	normal/quick: 0.3" / 1" per pump		With/without load: 2 / 2.75" per sec.								
Lowering speed with/without load	max. 7.5" per sec. / max. 2.8" per sec.		4.75" per sec. / 2.75" per sec.					4.75" / 3" per sec.			
Weight in lbs (without battery)	485	560	488	531	544	552	571	664	681	710	816

* Load reduction at large lifting height.

** Maximum lifting height 63" with 23.5" forks, maximum lifting height 96" with 31.5" forks.

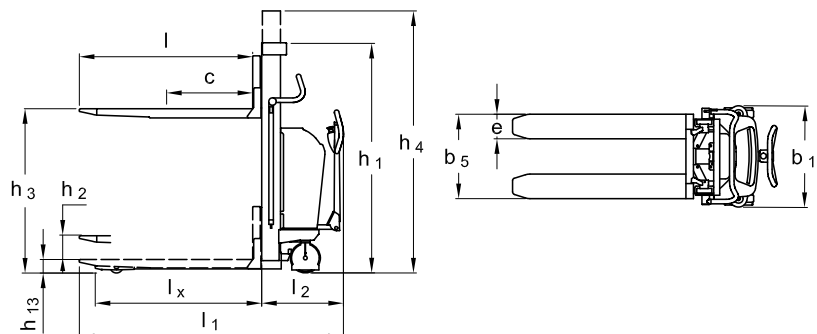
*** Reduced capacity 1650 lbs. Not available for 3000 lbs. models.

**** Only for 2200 lbs. models.

***** Tests show that 67" are enough.



Available with side-tilting forks and/or optional extras, e.g. drum turner, crane arm, spear, remote control, level control.



We also offer tailor-made solutions. Please ask for further information.
Please ask for further information or visit our website www.interthor.com



Interthor Inc.
1817 Beach Street - Broadview, IL 60155 - USA
Tel.: 708-345-1270 - Fax: 708-345-1290
www.interthor.com - E-mail: info@interthor.com