

Wrap-over forks, bar forks and chisel forks

High flexibility and efficiency - the different Interthor fork styles can easily carry and lift different pallets.

The forks can easily and quickly be fitted on all Trans-Positioners and Trans-Stackers with an adjustable carriage. The forks can easily be replaced by one of the many quick shift options, offered by Interthor.

A wide range of optional extras ensures optimum utilization of the Trans-Positioners and Trans-Stackers - the same unit can be fitted with the quick shift products from Interthor, such as spear, crane arm, platform, drum turner and reel rotator.

High quality is ensured through an extended test program and in cooperation with experts in Health and Safety.



Technical Specifications

Three different fork styles for different application situations for the customer. The individual fork style fits the job to be solved and the type of pallet to be lifted and carried.

Wrap-over forks: Standard forks for Trans-Positioner and Trans-Stacker.

Bar forks: Narrow forks for entry widths narrower than those on a Euro-pallet.

Chisel forks: Standard for trucks with a capacity of 3000 lbs. Thin forks for low heights under the load to be raised.

Strong construction ensures a long operating life and low maintenance costs.



The forks can be fitted on all TP and TS models with and without straddle legs.



Wrap-over forks: Standard forks for Trans-Positioner and Trans-Stacker.



Optional extras: boom, crane arm, platform, reel rotator and drum turner.

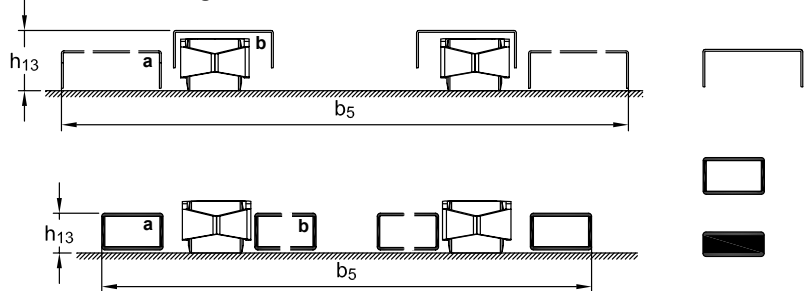


Drum forks - an ideal alternative when lifting and carrying horizontal forks (not quick shift).

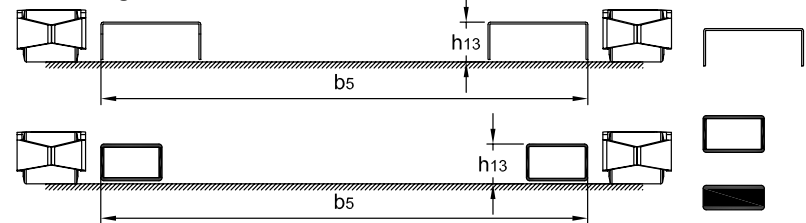


The chisel forks shown being used in a recycling plant of electronic components.

Adjustable fork carriage for Trans-Positioner and Trans-Stacker without straddle legs



Adjustable fork carriage for Trans-Positioner and Trans-Stacker with straddle legs



Product (measured in inch)	Fork carriage: 27"			Fork carriage: 32"		
	Wrap-over	Bar	Chisel	Wrap-over	Bar	Chisel
Size of wheel	Ø3.25			Ø3.25		
Fork span	b_5	13.25-31.5	9-27	b_5	13.25-36	9-31.5
Fork span - a	b_5			b_5	34.5-36	29.5-31.5
Fork span - b	b_5			b_5	22	9-11.75
Lowered fork height	h_{13}	2.5	2.5	h_{13}	2.5	1.75
Lowered fork height - a	h_{13}			h_{13}	2.5	1.75
Lowered fork height - b	h_{13}			h_{13}	3.5	1.75
Fork dimensions		6.5x2.5	4x2.5		6.5x2.5	4x2.5

* Standard carriage for Logiflex straddle stackers with wrap-over forks.

** Standard carriage for Logiflex straddle stackers with bar and chisel forks.
Standard carriage for Logiflex stackers without straddle legs.

Please also ask for adjustable fork carriage of 37.25" (b_5 : max. 41.35").

We also offer tailor-made solutions.

Please ask for further information or visit www.interthor.com